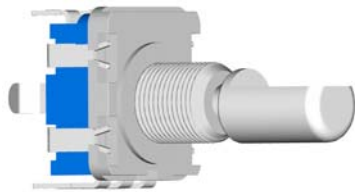


Model(型號): E11B20HS1



Features:

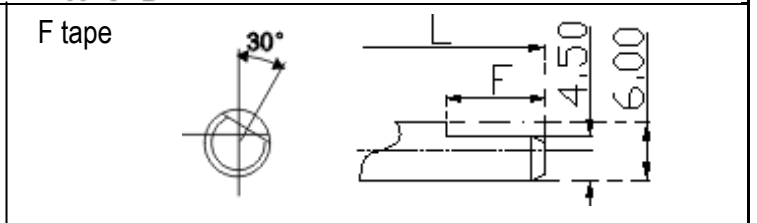
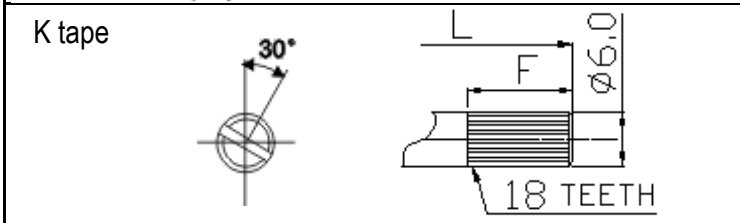
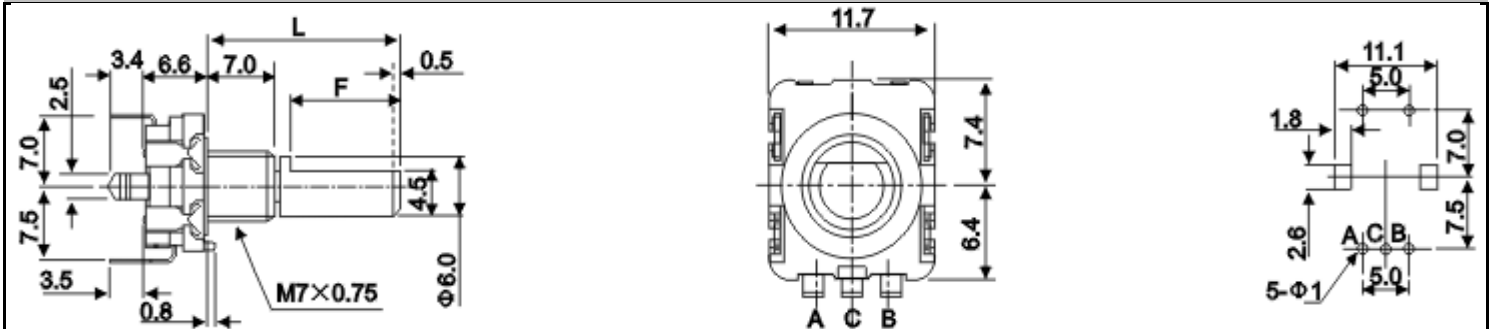
The operability has been improved by incorporating a good-feeling detent mechanism .

The unique through shaft shape contribute for simplifying set design,Ideal for all type of audio products.

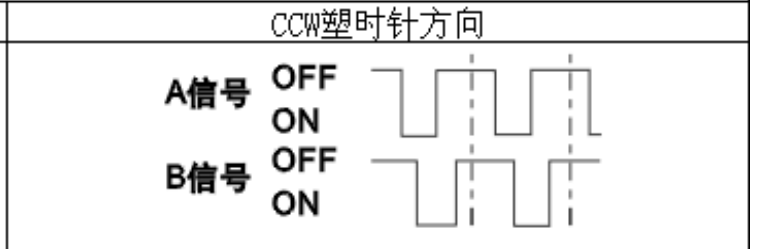
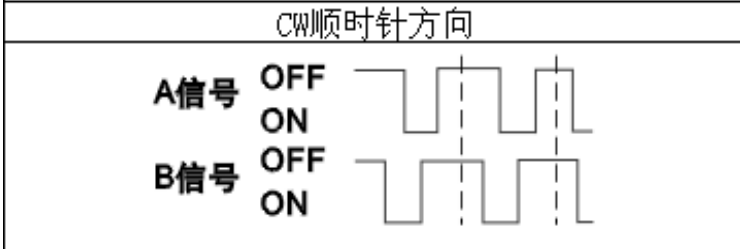
特點:

操作手感好，有多種軸形狀，有帶開關機種，應用於各類影音產品

Dimensions(規格圖):



Output signal [ 輸出信號 ]      The broken line shows detent position of with detent type [ 虛线为制子点位置 ]



Specifications(規格)

Electrical Characteristics [ 電氣性能 ]

Ratings power(w) [ 額定功率 ]	DC 5V 10mA
Insulation resistance [ 絕緣阻抗 ]	100MΩ at DC 300V
Withstanding voltage [ 耐電壓 ]	1 minute at AC 300V
Switch ratings power(w) [ 開關額定功率 ]	DC 16V 10mA

Mechanical Characteristics [ 機械性能 ]

Operation torque [ 回轉力矩 ]	30~200gf.cm
Total rotational angle [ 回轉角度 ]	360°
Switch travel [ 開關行程 ]	0.5mm
Switch operation torque [ 開關回轉力矩 ]	600gf.cm

Endurance Characteristics [ 耐久性能 ]

Switch rotational life [ 回轉壽命 ]	20000 cycles
Rotational life [ 回轉壽命 ]	30000 cycles